

All Seasons[®] Horticultural Spray Oil

Ready to Use

TRUSTED SINCE 1926

BONIDE[®]

Dormant & growing season insect spray

Kills all stages of insects including eggs

May be used up to the day of harvest

ACTIVE INGREDIENT:

Mineral Oil* . . . (CAS No. 8012-95-1) . . . 2.00%

OTHER INGREDIENTS: 98.00%

TOTAL: 100.00%

*Contains Petroleum Distillate

EPA Est. No. 4-NY-1 EPA Reg. No. 4-419

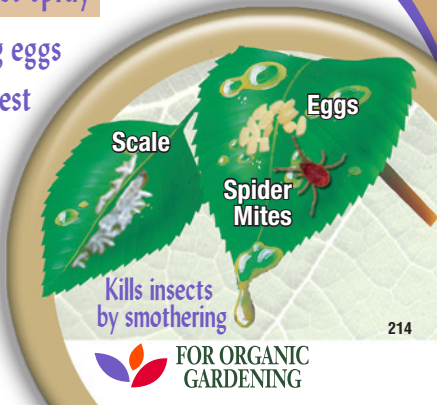
1 Do not apply when temperature is
greater than 90° F or less than 40° F.

This product is intended for small garden use only.

Keep Out Of Reach Of Children

CAUTION (See Back Panel for Additional
Precautionary Statements and First Aid)

Net Contents 32 FL. OZ. (946 ML.)



214



**FOR ORGANIC
GARDENING**

ALL SEASONS®¹ HORTICULTURAL SPRAY OIL READY TO USE

ALL SEASONS® HORTICULTURAL SPRAY OIL is a self-emulsifying spray oil, composed of paraffinic oil with emulsifier and spreader sticker, which envelop, wet and smother over-wintering eggs and/or other life stages of European red spider mites, adelgids, scale insects, apple aphids, bud moth, leaf roller (redbanded, obliquebanded, fruittree), light brown apple moth, red bug, codling moth larvae, psylla (adults), blister mites, whitefly larvae and mealybugs on fruit trees, shade trees, vegetables, ornamentals, shrubs and roses.

CONTROLS: Scale insects, Fungus Gnats, Thrips, Mealybugs, Apple Aphids, European Red Spider Mites, Leafminers, and others listed on this label.

USE on Fruits listed on this label, Nuts, Vegetables, Roses, Flowers, Houseplants and in Home Greenhouses.

Read and use according to application directions.

¹Do not apply when temperature is greater than 90°F or less than 40°F

Store and transport in an upright position.

EPA Est. No. 4-NY-1 EPA Reg. No. 4-419

©Bonide Products, Inc. All Rights Reserved



Bonide Products, Inc.
6301 Sutliff Road
Oriskany, NY 13424



Quart



DIRECTIONS FOR USE

It is a violation of Federal law to use this product in a manner inconsistent with its labeling.

Not for use on plants being grown for sale or other commercial use, or for commercial seed production, or for research purposes. For use on plants intended for aesthetic purposes or climatic modification and being grown in ornamental gardens.

Do not apply this product in any way that it will contact other persons or pets, either directly or through drift. Keep other persons out of the treated area during application. Do not allow persons or pets to enter the treated area until sprays have dried.

NOTE: DO NOT APPLY ALL SEASONS® HORTICULTURAL SPRAY OIL WITH SULFUR SPRAYS OR WHERE SULFUR IS ON THE FOLIAGE. TO DO SO MAY CAUSE FOLIAGE INJURY, LEAF DROP. DO NOT APPLY SPRAY OIL AT TEMPERATURES ABOVE 90° F OR WHEN PLANTS ARE DRY (SUFFERING FOR WANT OF MOISTURE) AS IT MAY CAUSE LEAF DROP DUE TO "SHOCK."

ALL SEASONS® HORTICULTURAL SPRAY OIL may be used at the DORMANT STAGE (before buds show green tissue), GREEN TIP STAGE (when leaves of blossom buds are bursting and show about $\frac{1}{8}$ to $\frac{1}{4}$ inch of green color), DELAYED DORMANT STAGE (when the leaves of the blossom buds are out from $\frac{1}{4}$ to $\frac{1}{2}$ inch), and during the GROWING SEASON.

FRUIT, NUTS & BERRIES

SHAKE WELL. Spray to wet entire surface of plant. Give special attention to underside of limbs and leaves.

CROP *Asterisk denotes crop not approved in California.	PESTS *Asterisk denotes pest not approved in California.	TIMING/RESTRICTIONS
Acerola (Barbados Cherry)* Atemoya* Carambola (Star Fruit)* Rambutan*	Aphids, Mites, Beetle Larvae, Leafminers, Thrips, Leafhopper, Whitefly, Caterpillars, Alternaria Leafspot, Gummy Stem Blight, Powdery Mildew, Rust	Spray once or twice weekly depending on the rapid growth of the crop and/or vector pressure.
	Cucumber Mosaic Virus, Papaya Ringspot Virus, Pepper Mottle Virus, Potato Leafroll Virus, Potato Virus Y, Tobacco Etch Virus, Watermelon Mosaic Virus 2, Zucchini Yellow Mosaic Virus	Spray as needed.
Almonds Apricots Cherries Nectarines Peaches Pistachio	Black Scale, European Fruit Lecanium Scale, Frosted Scale, Olive Scale, San Jose Scale, Brown Mite Eggs, European Red Mite Eggs, Aphid Eggs, Fruit Tree Leafroller* (Eggs), Wintering Phytocoris* (only on pistachio), Tent Caterpillars*	DORMANT AND DELAYED DORMANT: Re-spray as needed. European Fruit Lecanium Scale and European Red Mite Eggs: Apply from Green Tip to Delayed Dormant. San Jose Scale: Apply from Dormant, Green Tip to Delayed Dormant.

CROP *Asterisk denotes crop not approved in California.	PESTS *Asterisk denotes pest not approved in California.	TIMING/RESTRICTIONS
		For use on pistachio, apply as a dormant treatment and/or trees may be sprayed after harvest.
	Powdery Mildew* (Cherries, Nectarines and Peaches only)	Cherries: Preharvest Use: Use up to pit hardening stage. Apply at 10- to 14-day intervals - shorten interval when disease conditions are severe. Trees may be sprayed after harvest to maintain control and reduce overwintering inoculum. Nectarines/Peaches: Begin at 5% bloom and continue at 10- to 14-day intervals until terminal growth phase stops. Do not apply to oil sensitive varieties.
	Scales, Two-spotted Spider Mite, Pacific Mite, European Red Mite, Brown Mite	FOLIAR SPRAY: Spray as needed.
	White Peach Scale on Peaches: This use only is permitted in Georgia, Florida, South Carolina, North Carolina, and Alabama	DORMANT: Apply before bugs begin to swell in the spring. Make 2 applications 7-14 days apart, or according to local Cooperative Extension Service recommendations, during the dormant period.

CROP *Asterisk denotes crop not approved in California.	PESTS *Asterisk denotes pest not approved in California.	TIMING/RESTRICTIONS
Apples	European Fruit Lecanium Scale, Olive Scale, San Jose Scale, European Red Mite Eggs, Rust Mite, Rosy Apple Aphid Eggs, Apple Aphid Eggs	DORMANT OR DELAYED DORMANT: Spray as needed. Rust Mite: Apply during the delayed dormant timing.
	Codling Moth*	Restriction: Use to control first generation early instar stages only.
	Leafroller (red banded, oblique banded, fruit tree), Apple Red Bug, Scurfy Scale, European Red Mite, Bud Moth, Light Brown Apple Moth, Red Bug	GREEN TIP TO DELAYED DORMANT: Spray as needed.
	San Jose Scale, Forbes Scale	DORMANT, GREEN TIP TO DELAYED DORMANT: Spray as needed.
	Powdery Mildew	Apply at tight cluster and continue every 10-14 days through second cover spray. Use the 10-day spray interval when disease conditions are severe.
	Scales, Mites including: Two-spotted Spider Mite, Pacific Red Mite, European	FOLIAR SPRAY (Post Bloom): Apply every 10-14 days depending on level of pest pressure.

CROP *Asterisk denotes crop not approved in California.	PESTS *Asterisk denotes pest not approved in California.	TIMING/RESTRICTIONS
	Red Mite, Rust Mite, Leafhopper*, San Jose Scale, Rosy Apple Aphid*, Fruit Tree Leafroller*	Trees may be sprayed after harvest to maintain control and reduce over-wintering pressure. Do not apply oil to sensitive varieties.
Avocados	Avocado Brown Mite, Thrips, Persea Mite	Apply through late fall. Re-apply as needed. California: Consult with your local University of California Cooperative Extension Service for proper timing and application parameters.
Bananas Plantains	Black Leaf Streak (<i>Mycosphaerella fijiensis</i>), Black Sigatoka (<i>Mycosphaerella fijiensis</i> var. <i>difformis</i>), Yellow Sigatoka (<i>Mycosphaerella musicola</i>)	Begin application when disease first appears and continue every 10-15 days during rainy periods. Restriction: Do not apply when daytime temperatures exceed 80°F as injury may occur. Phytotoxicity may be affected by the quantity of oil used, vigor of trees and temperature at the time of application. Bag fruits, or use a directed spray on unbagged fruits. Bagged fruit improves crop safety whereas unbagged fruit may show phytotoxicity. This application is also effective in loosening Sooty Mold Fungus and in preventing its formulation by the control of Aphids, Mealybugs, Scales and Whitefly.

CROP *Asterisk denotes crop not approved in California.	PESTS *Asterisk denotes pest not approved in California.	TIMING/RESTRICTIONS
Blueberries Bushberries Caneberries Raspberries	Mites, Powdery Mildew, Rust, Sawfly (eggs)*, Scales*, Aphids, Mealybug	Spray for optimum coverage of leaf surfaces. Spray as needed.
Figs	Fig Scale	DORMANT OR DELAYED DORMANT: Spray as needed.
	Mites, Mealybug, Scale	Apply as foliar spray.
Grapes	Mealybug, Mites, Leafhopper*, Whiteflies*, Powdery Mildew, Botrytis	Spray for optimum coverage of leaf surfaces. Repeat sprays every 10-14 days. For Powdery Mildew - Make first application pre-bloom and continue every ten days to three weeks depending on level of disease pressure. Use 10-day spray interval when disease conditions are severe. For Botrytis Bunch Rot - Initiate sprays at bloom and repeat prior to bunch closing and véraison. Make a final application at harvest if needed. Oil will remove the bloom on grapes. Restriction: Table grapes must not be sprayed within 60 days of harvest. Restriction: On grapes, do not mix oil and copper more than once/season.

CROP *Asterisk denotes crop not approved in California.	PESTS *Asterisk denotes pest not approved in California.	TIMING/RESTRICTIONS
		Restriction: Do not use copper and oil together with fruit present.
Mango	Mites, Powdery Mildew	Apply every 2-3 weeks as necessary depending on level of pest pressure. For Powdery Mildew - Begin application before bloom. Repeat at bloom and every 2-3 weeks as necessary.
Olives	Olive (Parlatoria) Scale, Oleander Scale, Black Scale	POSTBLOOM THROUGH AUGUST AND AFTER HARVEST: Spray as needed.
	Mites	PREBLOOM TO POSTBLOOM BUCKSHOT: Spray as needed.
Papaya	Mites, Powdery Mildew, Papaya Ringspot Virus	For Powdery Mildew and Mites: Spray every 10-14 days depending on the level of pest pressure. For Virus: Spray weekly. Initiate spray when seeds are germinated.
Pears	European Fruit Lecanium Scale, Olive Scale, San Jose Scale, European Red Mite Eggs	DORMANT: Spray as needed.
	Pear Psylla	Apply before eggs are laid in early spring.

CROP *Asterisk denotes crop not approved in California.	PESTS *Asterisk denotes pest not approved in California.	TIMING/RESTRICTIONS
	Codling Moth*	Use to control first generation early instar stages only.
	Fruit Tree Leafroller, Pear Leaf Blister Mite	DORMANT: Spray as needed.
	Powdery Mildew	Apply at bud burst and continue every 10-14 days. Use the 10-day spray interval when disease conditions are severe.
	Scales, Two-spotted Spider Mite, Pacific Red Mite, European Red Mite, San Jose Scale and Italian Pear Scale (Summer forms), Leafhopper*, Pear Psylla	FOLIAR SPRAY (Post Bloom): Trees may be sprayed after harvest to maintain control and reduce over-wintering inoculum. Do not apply oil to sensitive varieties.
Pineapple	Mealybugs, Bud Moth, Chinese Rose Beetle	Spray as needed.
Plums Prunes	Black Scale, European Fruit Lecanium Scale, Frosted Scale, Olive Scale, San Jose Scale, Brown Mite Eggs, European Red Mite Eggs, Aphids Eggs, Fruit Tree Leafroller Eggs, Tent Caterpillars*	DORMANT AND DELAYED DORMANT: Spray as needed. Preferred times of application for European Fruit Lecanium Scale and European Red Mite Eggs are Green Tip to Delayed Dormant and for San Jose Scale are Dormant, Green Tip to Delayed Dormant.

CROP *Asterisk denotes crop not approved in California.	PESTS *Asterisk denotes pest not approved in California.	TIMING/RESTRICTIONS
	Two-spotted Spider Mite, Pacific Mite, European Red Mite, Brown Mite	<p>FOLIAR SPRAY: Spray as needed.</p> <p>Trees may be sprayed after harvest to maintain control and reduce over-wintering pressure. Do not apply oil to sensitive varieties.</p> <p>Restriction: Certain varieties of plums and prunes may be injured by oil sprays; check for tolerance prior to treatment. Do not apply to trees lacking moisture.</p>
Strawberries	Aphids*, Botrytis, Leafminers*, Mites, Powdery Mildew, Sawfly, Scale, Whiteflies	Spray as needed.

CITRUS (California Only)

Do not exceed a maximum of 4.8 pounds active ingredient per 1,000 square feet in California.

SHAKE WELL. Spray to wet entire surface of plant. Give special attention to underside of limbs and leaves.

CROP	PESTS	TIMING	RESTRICTIONS
Grapefruit Lemons Limes Oranges (Navel & Valencia) Tangelos Tangerines	Mites: Citrus Bud, Citrus Flat, Citrus Red, Citrus Rust	Central California: Lemons and Limes: make applications in all months except December through February. Grapefruit: make applications July through October. Navel Oranges: make applications July through September. Valencia Oranges, Tangelos, Tangerines and other citrus hybrids: make applications July through October. Spray as needed.	Restriction: Do not apply prior to or during a period of excessively high temperatures. Do not apply oil spray when trees show stress.
Other citrus hybrids	Mites: Citrus Bud, Citrus Flat, Citrus Red, Citrus Rust Scales: Black, Brown Soft, California Red, Citricola, Purple, Yellow, Red	Southern California: Coastal Lemons and Limes: apply May and June and/or September through December. Interior Lemons and Limes: apply in April and May and/or September through November. Grapefruit: make applications July through October. Naval Oranges: make applications July through September.	Consult with your local University of California Cooperative Extension Specialist for proper timing and spray program.

CROP	PESTS	TIMING	RESTRICTIONS
		Valencia Oranges, Tangelos, Tangerines and other citrus hybrids: make applications July through October. Spray as needed.	
	Mites: Citrus Bud, Citrus Flat, Citrus Red, Citrus Rust Scales: Black, Brown Soft, California Red, Citricola, Purple, Yellow, Red	Oxnard Plains Area: Make applications as needed throughout the year.	

CITRUS (Florida and Texas)

Do not exceed a maximum of 3.6 pounds active ingredient per 1,000 square feet in Texas and Florida.

SHAKE WELL. Spray to wet entire surface of plant. Give special attention to underside of limbs and leaves.

CROP	PESTS	TIMING	RESTRICTIONS
Citrons	Citrus Rust Mite, Spider Mites, Bud Mites, Flat Mites.	Summer spray only. Re-spray as needed.	Precautions in the use of oil include: Do not apply oil spray when trees are wilting. Do not apply oil and sulfur within 3 weeks of each other. Sensitive foliage may be injured. In Florida, consult the Florida Citrus Spray and Dust Schedule, or your Agricultural Experiment Station or State Extension Service Specialist for complete details on the spraying program best suited to your locale. In Texas, consult with your Agricultural Experiment Station or State Extension Specialist for complete details on the spraying program suited to your locale.
Grapefruits			
Lemons			
Limes			
Mandarins			
Oranges			
Tangelos			
Tangerines			
Other citrus	Does not control		
hybrids	Citrus Snow Scale		
	Whitefly, Blackfly		
	Greasy Spot (Grapefruit)		
DO NOT	Greasy Spot (all		
APPLY TO	other varieties)		
NAVEL	Loosening sooty		
ORANGES.	mold		

VEGETABLE GARDENS

SHAKE WELL. Spray to wet entire surface of plant. Give special attention to underside of limbs and leaves.

CROP *Asterisk denotes crop not approved in California.	PESTS *Asterisk denotes pest not approved in California.	TIMING/ RESTRICTIONS
Asparagus, Beans, Beets, Broccoli, Chinese Broccoli, Broccoli Raab, Brussels Sprouts, Cabbage, Cauliflower, Chinese Cabbage (Bok Choy and Napa), Chinese Mustard Cabbage (Gai Choy), Cavalo Broccoli, Collards, Kale, Kohlrabi, Mizuna, Mustard Greens, Mustard Spinach, Rape Greens, Celery, Chayote, Chinese Waxgourd, Citron Melon, Cucumber, Gherkin, Hyotan, Cucuzza, Hechima, Chinese Okra, Balsam Apple, Balsam Pear, Bitter Melon, Chinese Cucumber, True Cantaloupe, Cantaloupe, Casaba, Crenshaw Melon, Golden Pershaw Melon, Honeydew Melon, Honey Galls, Mango Melon, Persian Melon, Pumpkin, Summer Squash, Winter Squash, Watermelon, Dasheen (Taro)*, Eggplant, Ginger*, Ginseng*, Herbs and Spices* (Curly Leaf Basil, Lemon Balm), Japanese Radish (Daikon)*, Lettuce, Okra*, Peppers, Potatoes, Radishes, Sweet Potatoes	Aphids, Mites, Beetle Larvae, Leafminers, Thrips, Leafhopper, Whitefly, Alternaria Leafspot, Gummy Stem Blight, Powdery Mildew, Rust Cucumber Mosaic Virus, Papaya Ringspot Virus, Pepper Mottle Virus, Potato Leafroll Virus, Potato Virus Y, Tobacco Etch Virus, Watermelon Mosaic Virus 2, Zucchini Yellow Mosaic Virus.	Spray once or twice weekly depending on the rapid growth of the crop and/or vector pressure. Spray as needed.

CROP *Asterisk denotes crop not approved in California.	PESTS *Asterisk denotes pest not approved in California.	TIMING/ RESTRICTIONS
Chinese Artichoke* (Japanese Artichoke), Cilantro*, Herbs and Spices* (Mexican Oregano, Mint)	Aphids, Mites, Beetle Larvae, Leafminers, Thrips, Leafhopper, Whitefly, Alternaria Leafspot, Gummy Stem Blight, Powdery Mildew, Rust, Pepper Psyllids, Cucumber Mosaic Virus 2, Papaya Ringspot Virus, Pepper Mottle Virus, Potato Leafroll Virus, Potato Virus Y, Tobacco Etch Virus, Watermelon Mosaic Virus 2, Zucchini Yellow Mosaic Virus	Spray once or twice weekly depending on the rapid growth of the crop and/or vector pressure.
Corn (Sweet)	Aphids, Mites, Leafhopper*, Leafminers, Corn Earworm, Rootworm, Armyworm, Whitefly, Cercospora*	Spray as needed.
Tomatoes	Aphids, Mites, Beetle Larvae, Leafminers, Thrips, Leafhopper, Whitefly, Alternaria Leafspot, Gummy Stem Blight, Powdery Mildew, Rust, Tomato Psyllid*, Tomato Pin Worm*, Fruit Worm*, Army Worm*, Horn Worm*, Lygus Bug*, Stink Bug*, Cucumber Mosaic Virus, Papaya Ringspot Virus, Pepper Mottle Virus, Potato Leafroll Virus, Potato Virus Y, Tobacco Etch Virus, Watermelon Mosaic Virus 2, Zucchini Yellow Mosaic Virus	Spray once or twice weekly depending on the rapid growth of the crop and/or vector pressure.

ROSES, FLOWERING SHRUBS & ORNAMENTALS

SHAKE WELL. Spray to wet entire surface of plant. Give special attention to underside of limbs and leaves.

PLANT	PESTS	TIMING/RESTRICTIONS
Flowering and Foliage Plants including Roses and Other Flowering Shrubs	Aphids, Adelgids, Eriophyid Mites, Gall Mites, Honey Locust Plant Bug, Lace Bug, Leaf Beetle Larvae, Leafminer (non-larvae), Leafrollers, Mealybugs, Psyllids (immature), Red Mites, Sawfly (larvae), Scales (immature), Spider Mites, Webworms, Whiteflies, Blackspot, Powdery Mildew, Young Caterpillars	Summer (Foliar or Cover): Spray as needed.
Foliage Ornamentals & Bedding Plants	Aphids, Adelgids	Summer (Foliar or Cover): Spray as needed. Application safety during bloom period must be determined for each individual species of plant to be treated by conducting a small test.
Non-Fruit-Bearing Trees: Apple, Cherry, Peach, Pear	Mites	Apply every 10-14 days.
	Powdery Mildew	Spray before disease first appears. Apply every 10-14 days.

PLANT	PESTS	TIMING/RESTRICTIONS
Shade Trees** Ornamental Trees** Shrubs (including Conifers, Deciduous and Broadleaf Evergreens & Woody Ornamentals)	Aphids, Adelgids, Eriophyid Mites, Gall Mites, Hemlock Wooly Adelgids, Honey Locust Plant Bug, Lace Bug, Leaf Beetle Larvae, Leafminer (non- larvae), Leafrollers, Mealybugs, Psyllids (immature), Red Mites, Sawfly (larvae), Scales (immature), Spider Mites, Webworms, Whiteflies, Blackspot, Powdery Mildew, Young Caterpillars	Summer (Foliar or Cover): Spray as needed. Use enough spray solution to completely penetrate the leaf canopy and cover both top and bottom of all the leaves and stems until wet but without significant runoff. Fall Dormant applications: Limit use only to: American Red Oak, Japanese Black Pine, Dogwood, Weeping Cherry, Cornelian Cherry, Crabapple, Norway Maple, Purple Plum. Restriction: Do not spray when there is obvious moisture deficit in leaves, or the plant is under stress. This product may cause discoloration of Blue Spruce. Do not use on conifers or ferns not tolerant to oil sprays (e.g. Alberta Dwarf Spruce).

**This product removes the glaucous (blue) bloom from such evergreens as Colorado Blue Spruce and Koster Spruce.

Always test spray oil sensitive plants such as Cryptomeria, Smoke Tree, Chamaecyparis, Juniper, Japanese Holly and Spruce.

Tendency toward sensitivity: Red Cedar and Douglas Fir.

HOUSEPLANTS

SHAKE WELL. Spray to wet entire surface of plant. Give special attention to underside of stems and leaves.

PLANT	PESTS	TIMING/RESTRICTIONS
Chrysanthemum, Dieffenbachia, Dracaena, Ferns, Gardenias, Geranium, Jade Plant, Palms, Philodendron, Schefflera	Aphids, Leafminers, Mealybugs, Scales, Spider Mites, Whitefly**	Protect floor, floor coverings and furnishings from overspray. After making 3 consecutive applications, allow at least two weeks to pass before making a fourth application. Do not apply to plants in direct sunlight behind glass. Do not use on Coconut Palms or Maidenhair Ferns. The blooms of Chrysanthemum and Geranium have shown Phytotoxic symptoms. <i>**All Seasons® Horticultural Spray Oil is most effective on Whitefly during immature stages.</i>

HOBBY GREENHOUSES

SHAKE WELL. Spray to wet entire surface of plant. Give special attention to underside of stems and leaves.

PLANT	PESTS	TIMING/RESTRICTIONS
Ageratum, Crown of Thorns, Dieffenbachia, Dogwood*, Dracaena*, Ferns, Ficus, Holly*, Lisianthus, Magnolia*, Orchid, Palms, Petunia, Poinsettia, Schefflera, Sunflower Aglaonema, Aster, Azaleas, Begonias, Browallia, Camellias, Carnation, Celosia, Chrysanthemum, Coleus, Cosmos, Crepe Myrtle*, Dusty Miller, Easter Lilies, Fuchsia*, Gardenias, Geranium, Gerbera, Helichrysum, Hibiscus Foliage, Hydrangea, Impatiens*, Jade Plant, Marigold, New Guinea Impatiens, Nicotonia, Philodendron, Portulaca, Reiger Begonias, Snapdragon, Zinnias	Aphids, Fungus Gnats, Leafminers, Mealybugs, Scales (soft & hard), Spider Mites, Thrips, Whitefly**, Powdery Mildew*	<p>Summer (Foliar or Cover): Use once a week initially, then as the pest is controlled, decrease the frequency to every 2-3 weeks as needed.</p> <p>Do not use on Coconut Palms or Maidenhair Ferns. The blooms of Chrysanthemum and Geranium have shown Phytotoxic symptoms.</p> <p>Due to varietal differences in response to a treatment of this product at the labeled rate, conduct a small test on 1 or 2 plants of the specific variety to be treated.</p> <p>Some plants are more sensitive to oil treatments if any of the following conditions are present when application is made: high humidity (74%), an overcast or cloudy day, inadequate air flow, a small greenhouse where the sunlight is magnified causing a fast build-up of temperature and light intensity.</p> <p>*Asterisk denotes crop, pest not approved in California.</p> <p><i>**All Seasons® Horticultural Spray Oil is most effective on Whitefly during immature stages.</i></p>
Leaf Polish for Hardy Plants		

FOR ALL APPLICATIONS:

- Do not apply more often than indicated on this label.
- Certain plant species may be sensitive to oil. A small number of plants or branches should be test-sprayed prior to general spraying.
- Use caution on open blooms - bleaching and spotting have been observed on the open blooms of certain plants.

IMPORTANT: Do not spray drought-injured or winter-burned plants. Do not apply oil sprays within 30 days of sulfur applications. Injury may result if oil sprays are used on ferns, palms, hibiscus, certain conifers including blue spruce, white pine, arborvitae and junipers, and certain deciduous trees such as Japanese maple, beech, hickory, walnut, and butternut.

Shake occasionally to keep solution agitated.

STORAGE AND DISPOSAL

Pesticide Storage: Store and transport in an upright position. Store in a cool dry area inaccessible to children or pets. Keep container tightly closed to prevent evaporation. Do not use, pour, spill or store near heat or open flame. **Pesticide Disposal:** *If partly filled* - Call your local solid waste agency for disposal instructions. Never place unused product down any indoor or outdoor drain. **Container Disposal:** *If empty* - Nonrefillable container. Do not reuse or refill this container. Place in trash or offer for recycling if available.

FIRST AID

Have the product container or label with you when calling a poison control center or doctor, or going for treatment. You may also contact the National Pesticide Information Center at 1-800-858-7378 for emergency medical treatment information.

**If in
Eyes:**

- Hold eye open and rinse slowly and gently with water for 15-20 minutes.
- Remove contact lenses, if present, after the first 5 minutes, then continue rinsing eye.
- Call a poison control center or doctor for treatment advice.

Note to Physician: This product contains petroleum distillates and may pose an aspiration pneumonia problem.

PRECAUTIONARY STATEMENTS

HAZARDS TO HUMANS AND DOMESTIC ANIMALS

CAUTION: Causes moderate eye irritation. Avoid contact with eyes or clothing. Wash thoroughly with soap and water after handling and before eating, drinking, chewing gum or using tobacco. Wear long-sleeved shirt, long pants, shoes, socks and waterproof gloves when using or handling this product.

ENVIRONMENTAL HAZARDS

This product is toxic to fish. To protect the environment, do not allow pesticide to enter or run off into storm drains, drainage ditches, gutters or surface waters. Applying this product in calm weather when rain is not predicted for the next 24 hours will help to ensure that wind or rain does not blow or wash pesticide off the treatment area. Apply this product only as specified on the label.

For information on pesticide products (including health concerns, medical emergencies, or pesticide incidents), call the National Pesticide Information Center at 1-800-858-7378.

WARRANTY

Seller warrants that this product complies with the specifications expressed in this label. To the extent consistent with applicable law, Seller makes no other warranties, and disclaims all other warranties, express or implied, including but not limited to warranties of merchantability and fitness for the intended purpose. To the extent consistent with applicable law, Seller's liability or default, breach or failure under this label shall be limited to the amount of the purchase price. To the extent consistent with applicable law, Seller shall have no liability for consequential damages.

THIS PAGE LEFT INTENTIONALLY BLANK.

THIS PAGE LEFT INTENTIONALLY BLANK.