



25 CARDIGAN

N° 135 - T16 - 213



TO FIT

a) 34/36 - b) 38/40 - c) 42/44 - d) 46/48 - e) 50/52
CHEST a) 80/84 - b) 88/92 - c) 96/100 - d) 104/110 - e) 116/122 cm

MATERIALS

PARTNER 6: a) 12 - b) 13 - c) 14 - d) 14 - e) 15 balls of BORDEAUX
1 pair of 6 mm (UK 4 - US 10) knitting needles
Cable needle
2 x 40 mm toggles

Composition: 50% polyamide, 25% combed wool, 25% acrylic

STITCHES

K3,p3 rib

St st and rev st st

Patt st N° 1 (see chart)

Patt st N° 2: 2 rows in st st, *2 rows in rev st st, 4 rows in st st*, repeat from * to * (ie. 6 rows)

TENSION

Be sure to check your tension before starting to knit. If tension is too tight, change to larger needles; if it is too loose, change to smaller needles.
15 sts and 23 rows to 10 cm measured over patt st N° 2 using 6 mm needles

The 16 sts in patt st N° 1 to 9 cm using 6 mm needles

RIGHT FRONT and BACK SECTION

Using 6 mm needles, cast on a) b) 71 - c) d) 75 - e) 79 sts and work in patt st N° 1 and patt st N° 2 (see STITCHES and chart) as follows: 2 sts in st st, the 16 sts in patt st N° 1 and a) b) 53 - c) d) 57 - e) 61 sts in patt st N° 2.

When work meas a) 27.5 - b) c) 30 - d) e) 32.5 cm from beg, mark selv st on left edge to indicate armhole (= point C).

When work meas a) 70 - b) 72.5 - c) 75 - d) 77.5 - e) 80 cm from beg, on right edge, cast off 6 sts 3 times.

When work meas a) 72.5 - b) 75 - c) 77.5 - d) 80 - e) 82.5 cm from beg, loosely cast off all sts.

Work another section for Left Front and Back section, reverse shaping; work as follows: a) b) 53 - c) d) 57 - e) 61 sts in patt st N° 2, the 16 sts in patt st N° 1 and 2 sts in st st.

EDGE BANDS

Using 6 mm needles, cast on a) b) 142 - c) d) 151 - e) 160 sts and work in k3,p3 rib for 10 cm, beg 1st row with k4 and end with a) b) e) k3 - c) d) p3, then knit 1 row (RS) and work several rows of st st in a different color. Iron these rows, then simply unravel to base color when making up.

Work another band, reverse shaping.

MAKE UP

Sew 1st edge band along Right Front and Back section, matching sts and using backstitch on right side of work (k4 are at point A), sew seam from point A to point B, then from point C to point D (leave between points B and C open for arms).

Work in same way for other band and Left Front.

Join Back sections between point D and point E.

Make 2 loop buttonholes on Right Front, make 1st buttonhole 42 cm from bottom and foll buttonhole at an interval of 3 cm.

Sew buttons.

Right front and back sections

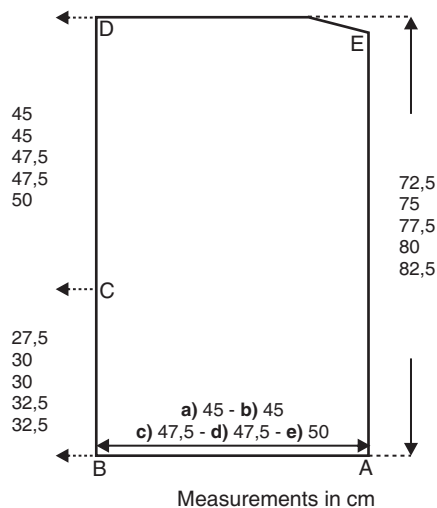
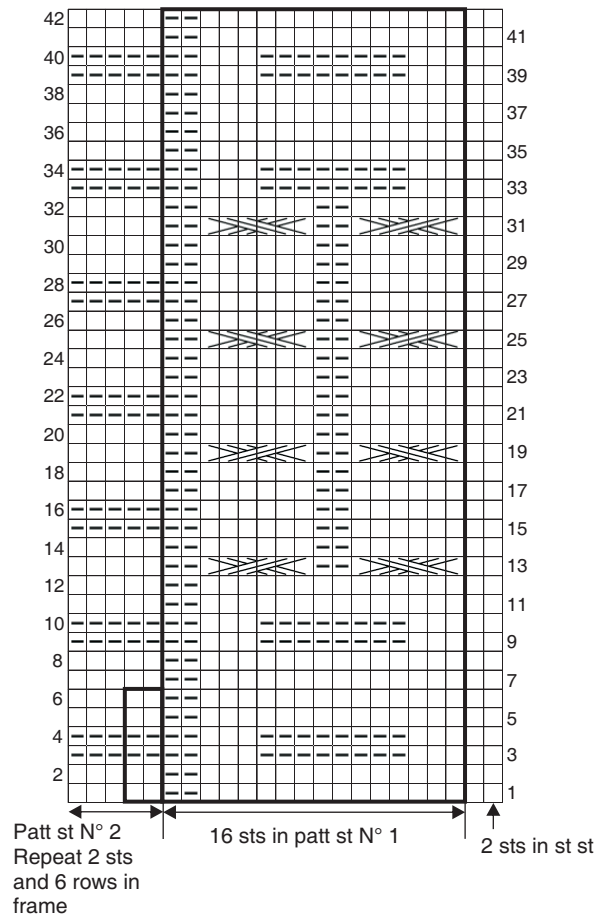


Chart for Patt st



Patt st N° 1
Repeat the 42 rows in chart

□ = k1 (RS) or p1 (WS)

▢ = p1 (RS) or k1 (WS)

▤ = 6 sts crossed to right: sl3 onto a cable needle held behind work, k3, then k3 on cable needle

▥ = 6 sts crossed to left: sl3 onto a cable needle held in front of work, k3, then k3 on cable needle

